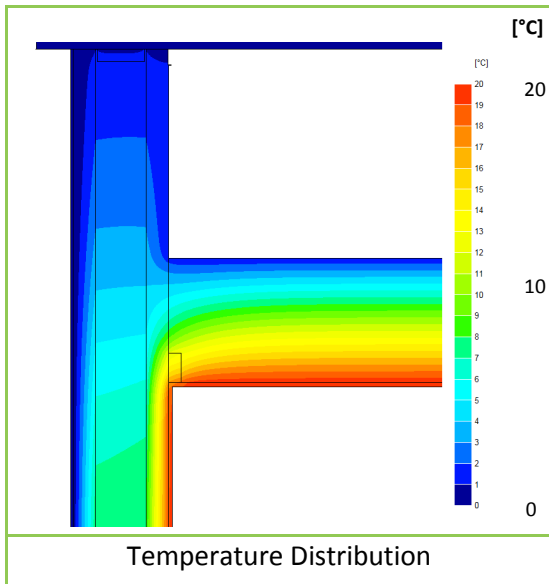
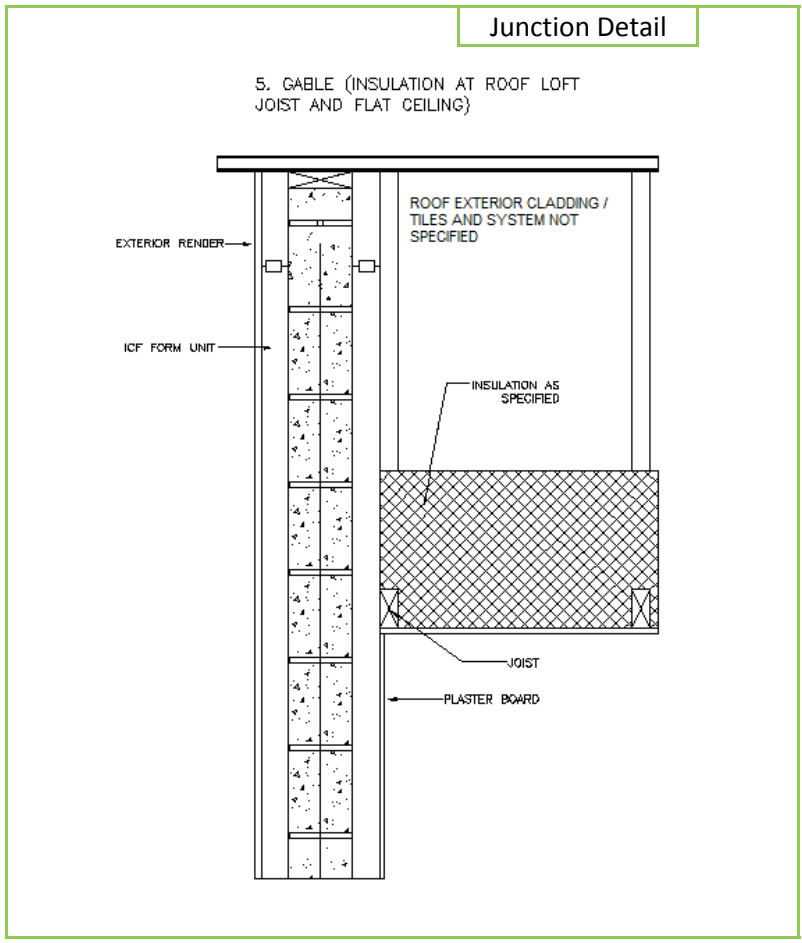


<b>Certificate No:</b>	<b>C4TM – 000369</b>	<b>Issued:</b>	<b>Monday 15 November 2010</b>
------------------------	----------------------	----------------	--------------------------------

**Issued to: UK ICFA**  
Christopher Stride  
Insulating Concrete Formwork Association  
Thermal House  
PO Box 72  
Billingshurst  
West Sussex  
RH14 0FD  
Tel: 0044 (0) 1403 701167  
E-mail: c.stride@btinternet.com

<b>General Construction Specification:</b> (see detail below for full construction)	Main/Load-bearing:	150mm (nominal) Dense Concrete Core, $\lambda \leq 2.00$
	Insulation:	2 layers of EPS, each with R value $\Rightarrow > 1.805 \text{m}^2\text{k/w}$ see note below
	Cavity:	15mm Cavity behind Brick if present
	Cladding:	9mm of Render OR 102mm Brick OR other Cladding
<b>Description:</b>	<b>ICF Wall, Gable @ Ceiling, Minimum Roof U-value 0.1</b>	
<b>Reference:</b>	<b>Gable @ Ceiling</b>	



Linear Thermal Transmittance W/m.K	
$\Psi =$	<b>0.078</b>

Temperature Factor <sup>3</sup> for Humidity and Mould	
$f =$	<b>0.938</b>

Calculation Prepared By: **Matthew Wright MA Physics (Oxon) PGCE**

- Notes: -**
- $\Psi$  and  $f$  are only valid for the detail drawn and described above.
  - These calculations apply to ICF forms with a minimum R value for the internal insulation layer (including embedded webs/fixing strips) of  $1.805 \text{m}^2\text{k/w}$  or greater, (e.g. 65mm of EPS with a  $\lambda$  value of 0.036), and where the external layer of insulation has an equal or greater R Value.
  - U-values for the flanking walls are  $U \leq 0.255 \text{ W/m}^2\text{.K}$ .
  - In dwellings, a temperature factor  $f$  that is  $> 0.75$  would avoid the risk of mould growth.
  - Calculations have been performed in accordance with:
    - **EN ISO 10211\_2007** (British Standards)
    - **IP 1/06 & BR497** (BRE Press)
 and with reference to the following publications:
    - **EN ISO 6946** (British Standards)
    - **BR443** (BRE Press)