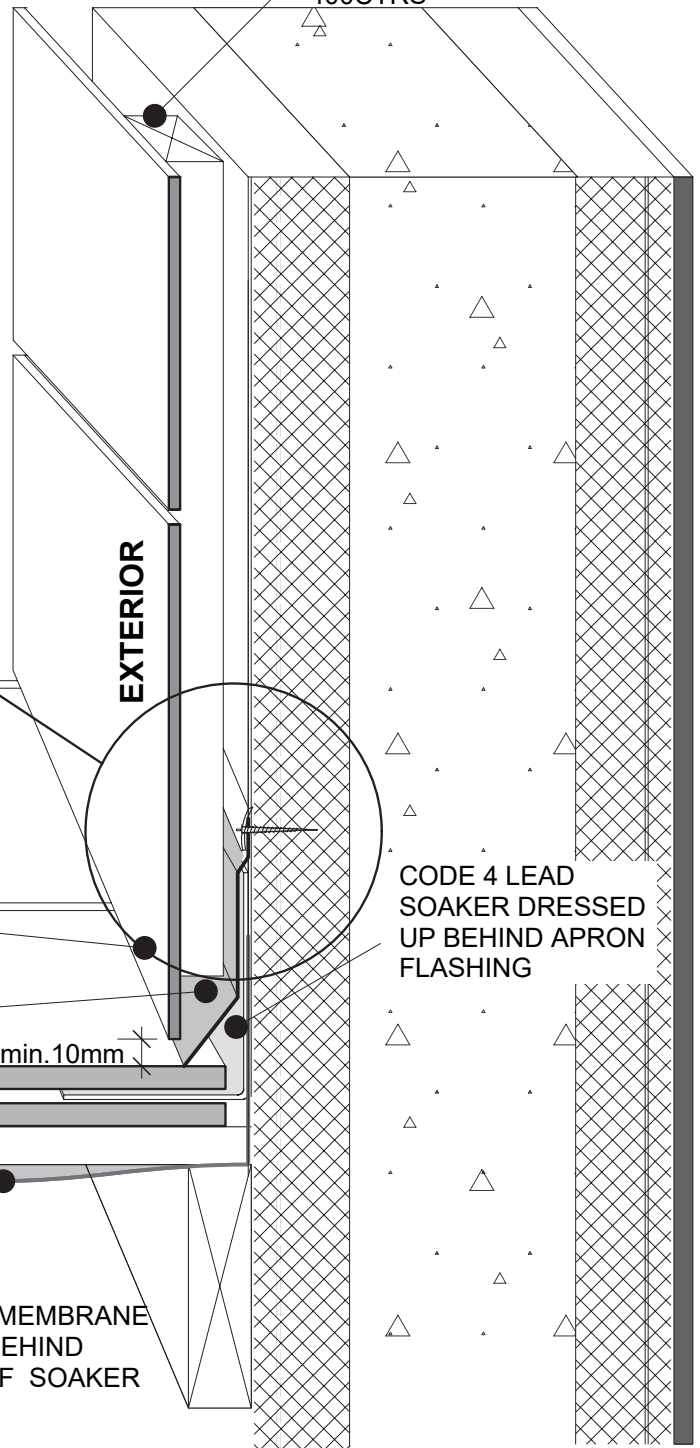
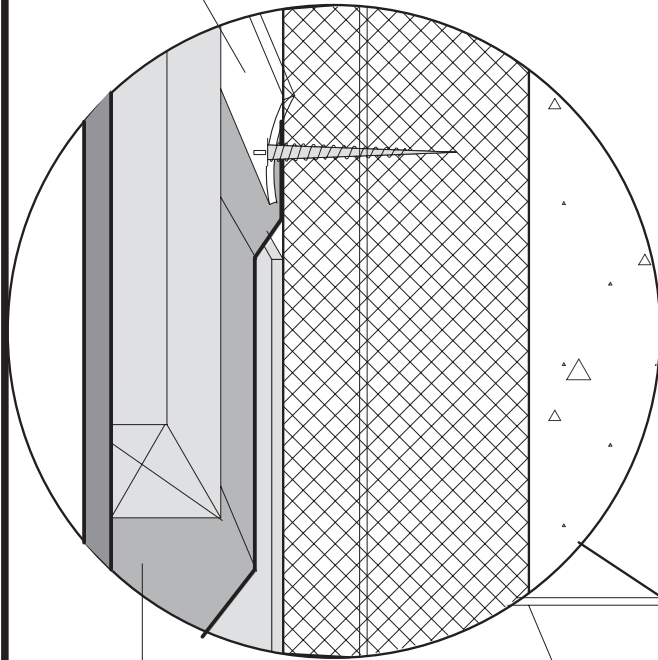


TYPE Z CAVISTRAP FROM CAVITY TRAYS (OR EQUIVALENT) TO RETAIN FLEXIBLE CAVITY MEMBRANE IN PLACE. STRAP SCREWED TO EACH FIRING STRIP WITHIN EPS WITH SS SCEWS. ENSURE STRAP 'BITES' INTO EPS TO ENSURE WATER TIGHT JUNCTION

CLADDING PANELS SUPPORTED ON TREATED TIMBER BATTENS, SCREWED TO FIRRING STRIPS WITHIN EPS USING SS. SCEWS AT 400CTRS



CLADDING PANEL BOARD (ie. SIMILAR TO GLASAL OR TRESPA), REFER TO MANUFACTURER FOR FIXING DETAILS

CODE 4 LEAD SOAKER DRESSED UP BEHIND APRON FLASHING

FLEXIBLE BREATHER MEMBRANE TO ACT AS CAVITY TRAY

min. 10mm

TILES & ROOF STRUCTURE INDICATIVE ONLY

BREATHER MEMBRANE TAKEN UP BEHIND UPSTAND OF SOAKER

NOTE: ALTHOUGH IT MAY NOT BE NECESSARY FOR REINFORCEMENT TO BE INCORPORATED FOR STRUCTURES UP TO THREE STOREYS IN HEIGHT, STRUCTURES UP TO FOUR STOREYS AND INDIVIDUAL SITE CONDITIONS MAY DICTATE OTHERWISE & THEREFORE AN ENGINEER / ARCHITECT SHOULD BE CONSULTED IN THESE CIRCUMSTANCES. ALL DETAILS ARE TO CONSTRUCTED IN ACCORDANCE WITH CURRENT BUILDING CODES AND REGULATIONS. POLYSTEEL UK RESERVES THE RIGHT TO CHANGE INFORMATION SHOWN WITHOUT NOTICE

POLYSTEEL



POLYSTEEL ABUTMENT FLASHING DETAIL FOR USE WITH BOARDED CLADDING PANELS

| | | |
|---|--------------|------------------------------|
| SCALE: 1:5 | APPROVED BY: | DRAWN BY: CSW |
| DATE: SEPT 2005 | | REVISED: 08/03/19 |
| Copyright 2005 POLYSTEEL UK Ltd | | DRWG. No. 09/DET07 |

Tel: 01722 446 594

www.polysteel.co.uk