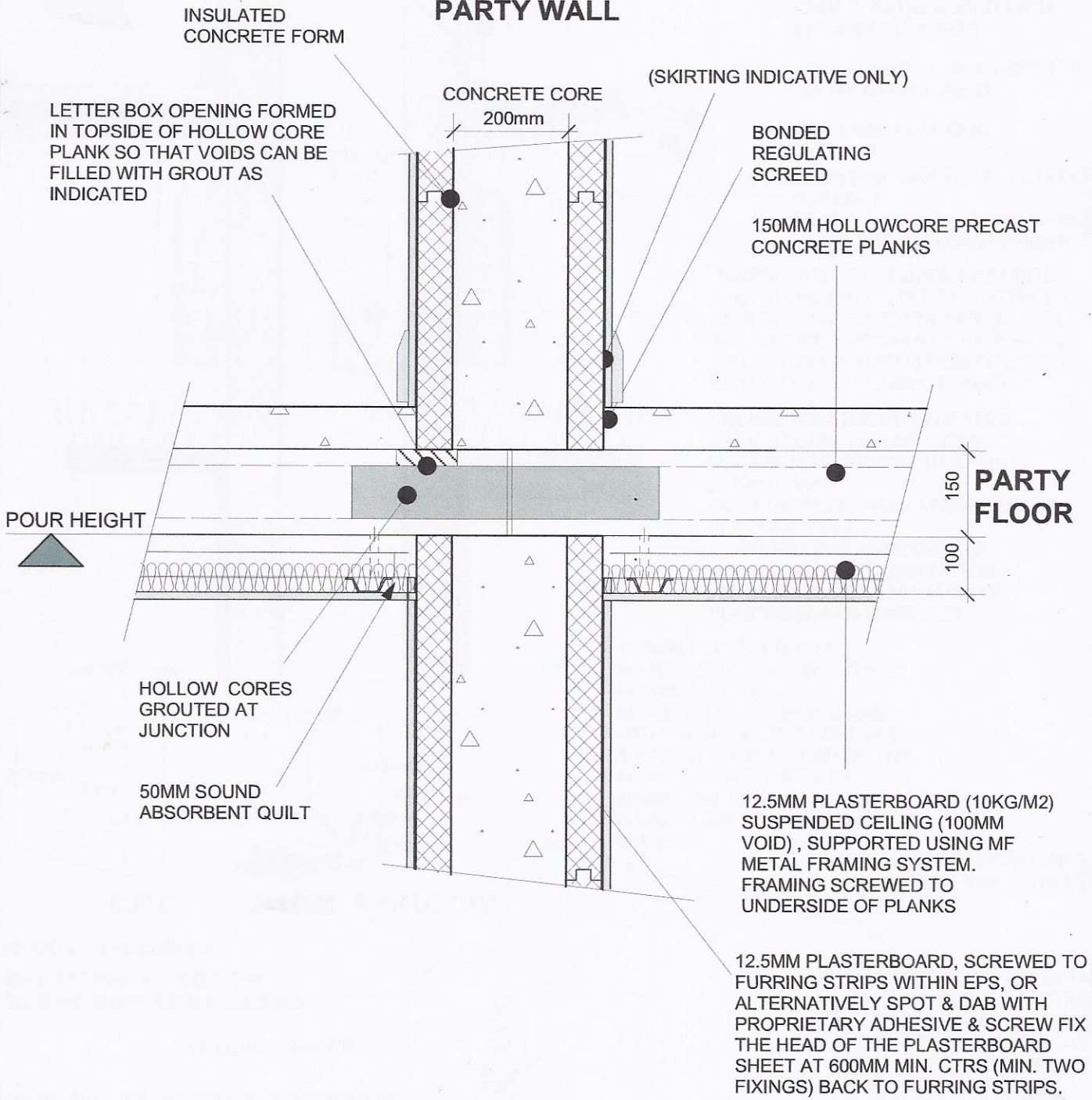


PARTY WALL



NOTE: ALTHOUGH IT MAY NOT BE NECESSARY FOR REINFORCEMENT TO BE INCORPORATED FOR STRUCTURES UP TO THREE STOREYS IN HEIGHT, STRUCTURES UP TO FOUR STOREYS AND INDIVIDUAL SITE CONDITIONS MAY DICTATE OTHERWISE & THEREFORE AN ENGINEER / ARCHITECT SHOULD BE CONSULTED IN THESE CIRCUMSTANCES. ALL DETAILS ARE TO CONSTRUCTED IN ACCORDANCE WITH CURRENT BUILDING CODES AND REGULATIONS. POLYSTEEL UK RESERVES THE RIGHT TO CHANGE INFORMATION SHOWN WITHOUT NOTICE

POLYSTEEL

POLYSTEEL Hollow core pre cast concrete floor alt. B 200mm core



SCALE: Not to scale
DATE: Feb 2007

APPROVED BY:

DRAWN BY: CSW

REVISED: 08/03/19

Copyright 2005

DRWG. No.

POLYSTEEL UK Ltd

05/DET07A

Tel: 01722 446 594

www.polysteel.co.uk