

POLYSTEEL LINTEL
AS REQUIRED, FOR
REQUIREMENT REFER TO
LINTEL TECHNICAL SHEET

METAL LINTEL TO SUPPORT
BRICKWORK OVER APERTURES.
SIZE AS RECOMMENDED BY
ENGINEER OR MANUFACTURER

VBUCK VINYL WINDOW
BLOCK OUT TO BE SCREWED INTO
FIRRING STRIPS WITHIN EPS

WINDOW JAMB FINISHED
WITH 12.5MM PLASTERBOARD

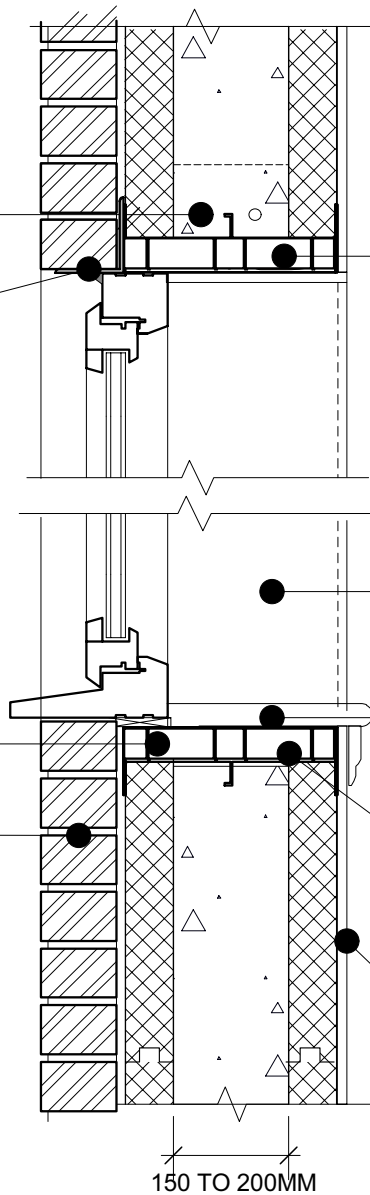
CILL BOARD

HOLES TO BE DRILLED IN SILL
VBUCK (CENTRE VOID
PORTION) TO ENABLE
CONCRETE TO BE
COMPLETELY PLACED

12.5MM PLASTERBOARD

VBUCK VINYL WINDOW
BLOCK OUT

EXTERIOR FINISH
INDICATING
BRICKWORK



150 TO 200MM

NOTE: ALTHOUGH IT MAY NOT BE NECESSARY FOR REINFORCEMENT TO BE INCORPORATED FOR STRUCTURES UP TO THREE STOREYS IN HEIGHT, STRUCTURES UP TO FOUR STOREYS AND INDIVIDUAL SITE CONDITIONS MAY DICTATE OTHERWISE & THEREFORE AN ENGINEER / ARCHITECT SHOULD BE CONSULTED IN THESE CIRCUMSTANCES. ALL DETAILS ARE TO CONSTRUCTED IN ACCORDANCE WITH CURRENT BUILDING CODES AND REGULATIONS. POLYSTEEL UK RESERVES THE RIGHT TO CHANGE INFORMATION SHOWN WITHOUT NOTICE



INSULATING CONCRETE FORMS

Tel: 08703 822229 Fax: 08701 696869 www.polysteel.co.uk

Window head and cill with VBUCK Vinyl Block out

SCALE: 1:10	APPROVED BY:	DRAWN BY: CSW
DATE: MAY 2005		REVISED: 30.09.05
Copyright 2005 POLYSTEEL UK		DRWG. No. 07/DET05