

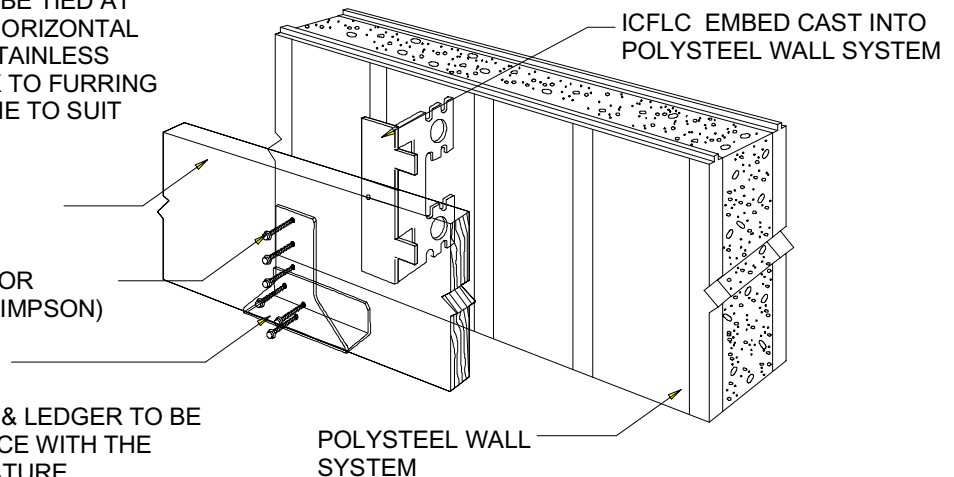
EXTERNAL FINISH INDICATIVE ONLY, HOWEVER IF USING BRICKWORK, BRICKS TO BE TIED AT 450mm VERTICAL CTRS & 750MM HORIZONTAL CTRS (NOT STAGGERED) USING STAINLESS STEEL WALL TIES SCREWED BACK TO FURRING STRIPS WITHIN EPS. LENGTH OF TIE TO SUIT WIDTH OF BRICKWORK

WOOD OR LVL LEDGER

SELF TAPPING CONNECTOR  
SCREWS SUPPLIED BY (SIMPSON)

ICFLC-W HANGER

NOTE: THE USE OF ICFLC & LEDGER TO BE SPECIFIED IN ACCORDANCE WITH THE MANUFACTURERS LITERATURE



NOTE: ALTHOUGH IT MAY NOT BE NECESSARY FOR REINFORCEMENT TO BE INCORPORATED FOR STRUCTURES UP TO THREE STOREYS IN HEIGHT, STRUCTURES UP TO FOUR STOREYS AND INDIVIDUAL SITE CONDITIONS MAY DICTATE OTHERWISE & THEREFORE AN ENGINEER / ARCHITECT SHOULD BE CONSULTED IN THESE CIRCUMSTANCES. ALL DETAILS ARE TO CONSTRUCTED IN ACCORDANCE WITH CURRENT BUILDING CODES AND REGULATIONS. POLYSTEEL UK RESERVES THE RIGHT TO CHANGE INFORMATION SHOWN WITHOUT NOTICE



INSULATING CONCRETE FORMS

Tel: 08703 822229 Fax: 08701 696869 www.polysteel.co.uk

### Floor to wall Junction, Type: Timber Joist floor (detached dwellings only)

SCALE: not to scale	APPROVED BY:	DRAWN BY: CSW
DATE: MAY 2005		REVISED: 30.09.05
Copyright 2005	DRWG. No.	
<b>POLYSTEEL UK</b>	<b>05/DET10</b>	